



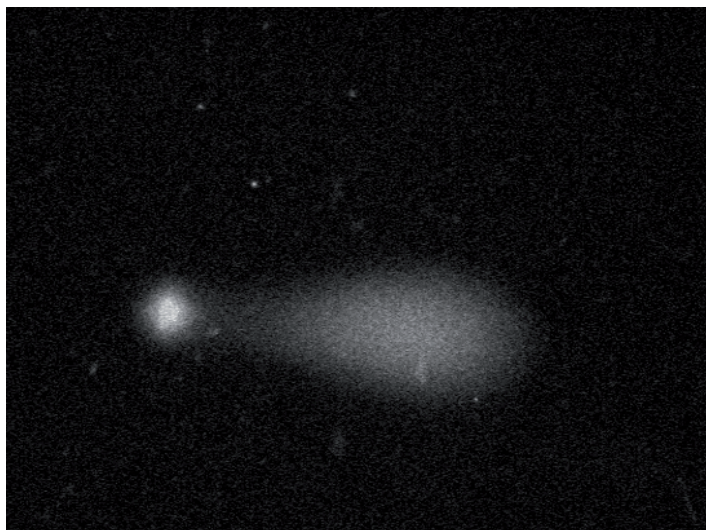
LUCIA Comet Assay

For Automatic Comet Assay Analysis

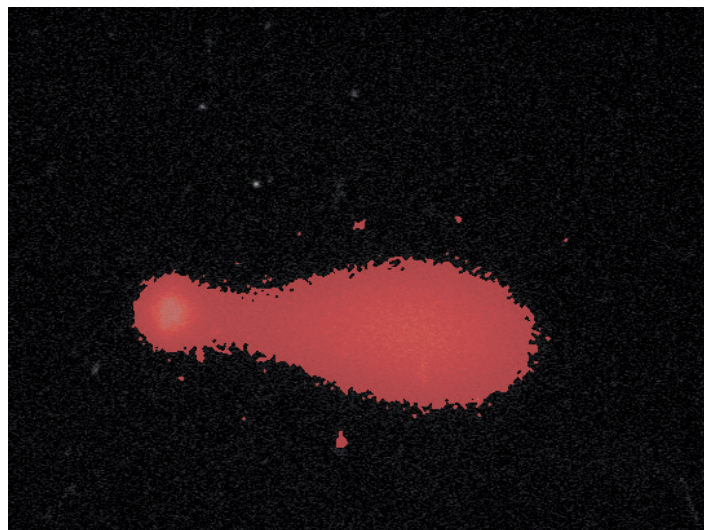
The system is based on a powerful image analysis software. A wide range of image optimising procedures is included neither influencing the densitometric nor the photometric information. The software also provides real time LUTs overlay processing for non-destructive image enhancements. A high-quality digital camera is fully controlled by the computer.

There is a close relation between the photometric measurement and the visual display of the detected comet shape. The user may adjust the comet segmentation and the head-tail separation interactively.

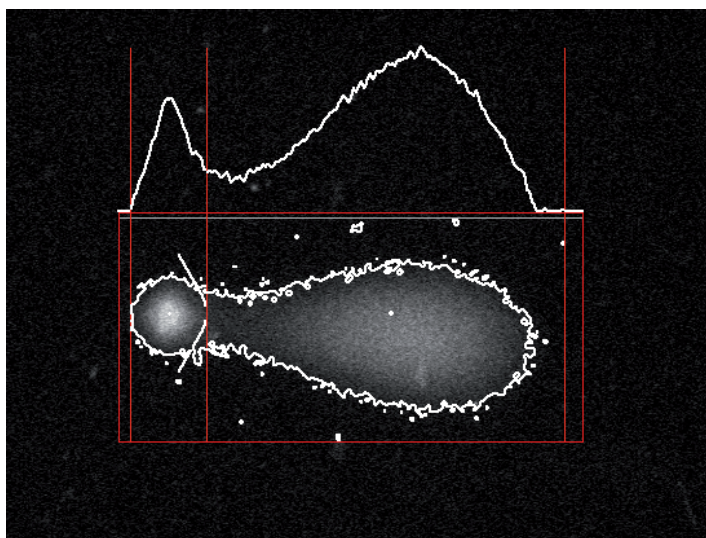
LUCIA Comet Assay is designed for either routine or advanced research measurements. On request, the system can provide morphologic corrections improving the segmentations of comets. Once a careful calibration of the hardware and the measuring procedure is done, you can rely on the results correctness.



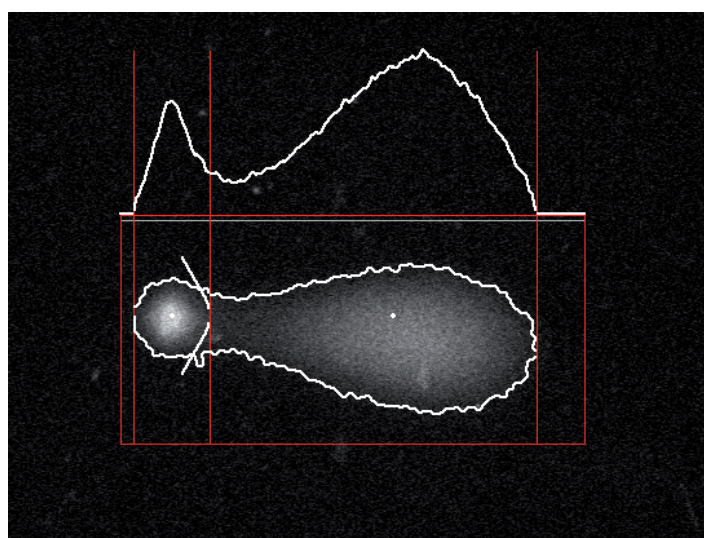
Arabidopsis comet, nuclei prepared from a root



The comet after threshold



Automatic segmentation of the comet head and the comet tail and the display of the integral intensity histogram.



The segmented comet with the intensity histogram after morphological filtering.