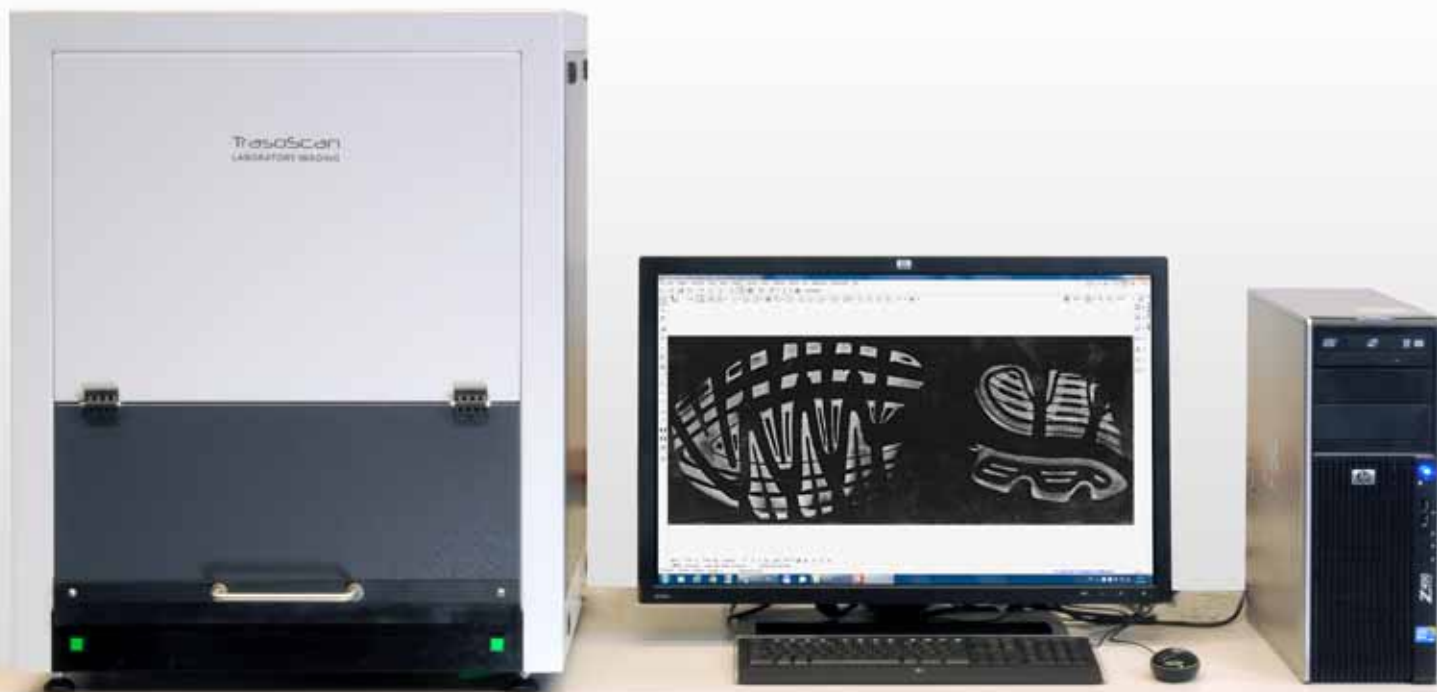




TrasoScan™

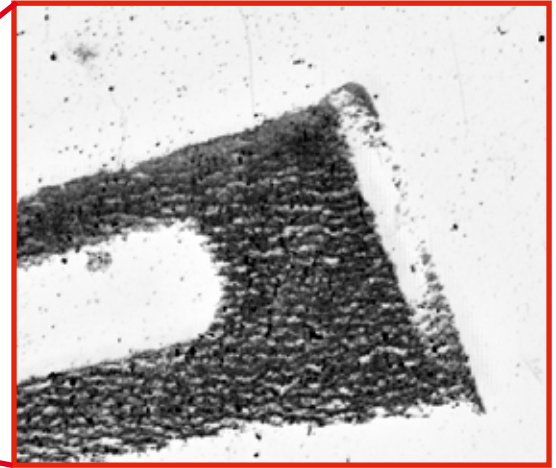
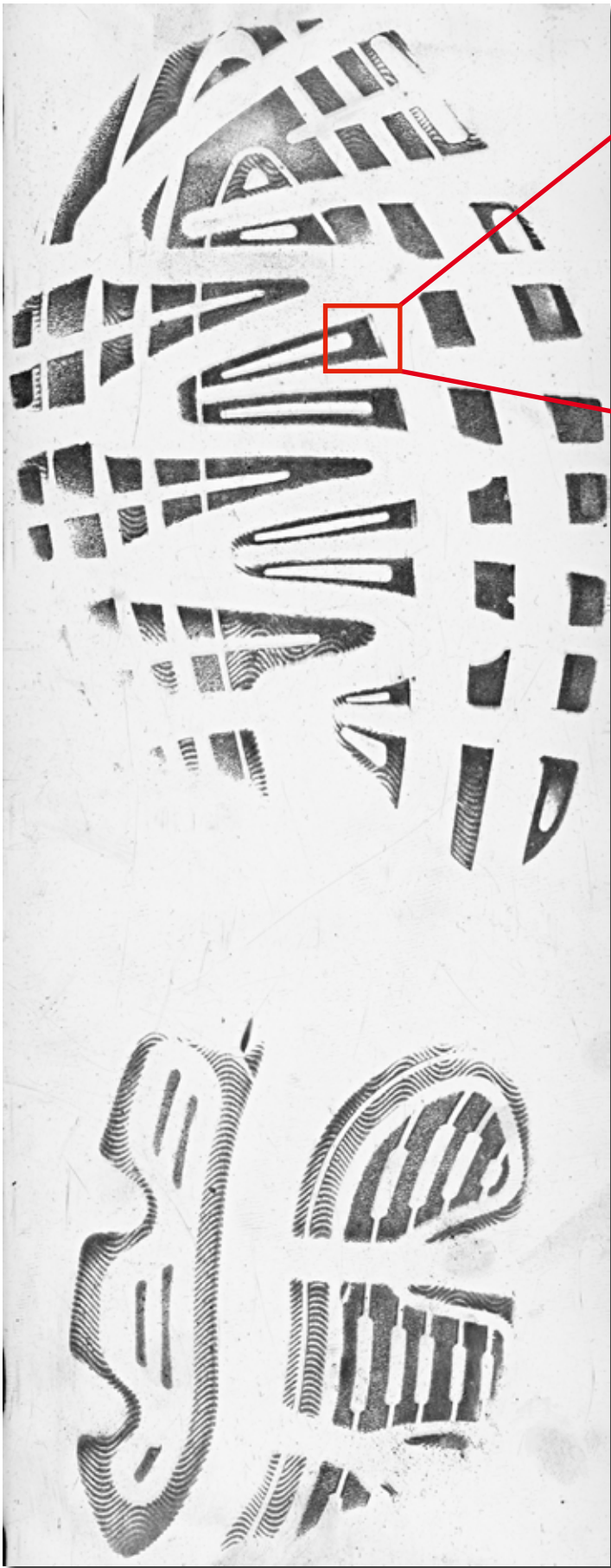
Shoeprint Scanning System



Lucia TrasoScan™, the Laboratory Imaging system for forensic shoeprint investigation, consists of a specialized device for capturing shoeprint images and the software for controlling the device, image acquisition and comparisons.

Features

- The resolution is automatically maintained constant and precise and is independent on the thickness of the scanned object*
- The resolution of 1000 ppi is sufficient even for fingerprint scanning*
- Gelatine lifters (black, white, transparent), adhesive lifters, paper, foils and all types of plane objects with maximum thickness of 2,5 cm can be scanned*
- Scanning area of 19 x 37 cm covers all common gelatine lifters*
- The vacuum table with grooves providing perfect flatness of the scanned surface thus minimising distortions and light reflections*
- Live scene preview and joystick control of the camera position enable fluent scene selection*
- Illumination settings and calibration are saved within the image file providing full reproducibility of the scanning conditions*
- All common image formats are supported for storing images in full resolution*
- 64bit operating systems enable to perform image comparisons of extra large images exceeding 100MB*



Software Features

- Image of the live scene or the whole shoeprint can be captured in full resolution of 1000 ppi
- Precise automatic calibration of captured images
- 1:1 real size display on screen
- Several side-by-side and overlay comparison modes for two-image comparison and also modes for simultaneous multiple image comparison
- Automatic image matching
- Annotations (arrows, texts, rulers) can be inserted in a separate layer without image data distortion
- Measurement of length, area, angle and other variables can be performed on calibrated images
- Results of comparison with annotations can be exported as a separate image
- Report templates can be created for quick and simple report generation

Specifications

Image resolution:	1000 ppi (pixels per inch)
Scanning range:	19 x 37 cm
Camera field of view:	4,9 x 6,5 cm
Software:	LUCIA Forensic™
PC OS:	64bit Windows 7
Screen:	27" LCD
Illumination:	6 independent LED panels
Other accessories:	Vacuum table